

GMC YUKON



RYMCO
RASAMNY YOUNIS MOTOR CO.

GMC

MEET THE GMC YUKON

Yukon delivers premium accommodations, the latest available technologies and robust capability.



Due to current supply-chain shortages, certain features shown throughout this catalog, including on the cover, have limited or late availability, or are no longer available. See the window label or a dealer regarding the features on an individual vehicle.

PREMIUM AND CAPABLE

Live large in the big, bold Yukon. It's more than the ultimate premium SUV—it's a way of life. Yukon gives you powerful capability, available premium amenities and more of what you need—and want.



Due to current supply-chain shortages, certain features shown have limited or late availability, or are no longer available. See the window label or a dealer regarding the features on an individual vehicle.

LIVE LARGE IN YUKON



Yukon SLE provides advanced technology, bold style and the robust capability to make the most of every drive.



Yukon AT4 offers high-end luxury with the off-road capability to leave the limitations of the road behind.



Yukon Denali is beautifully appointed, technologically advanced and engineered to be the ultimate premium and capable SUV.

DENALI

YUKON DENALI: KING OF THE ROAD

The magnificently appointed Yukon Denali elevates the ultimate premium SUV to even greater heights.



Due to current supply-chain shortages, certain features shown have limited or late availability, or are no longer available. See the window label or a dealer regarding the features on an individual vehicle.

DENALI INTERIOR

DENALI

ABSOLUTELY DISTINCTIVE

AN EXCEPTIONAL EXPERIENCE

Yukon Denali's unique and exclusive interior offers striking design, sumptuous finishes and your choice of four color themes that make every day a big event.

The leather appointments are highlighted by stitching, which uses contrasting thread to create a meticulous Fractal, X-stitch pattern.

DENALI





Due to current supply-chain shortages, certain features shown have limited or late availability, or are no longer available. See the window label or a dealer regarding the features on an individual vehicle.

Make every trip a first-class affair with innovative features such as a power-sliding center console,¹ which slides back with the touch of a button to provide up to 10" of additional room.

- Four Denali-Exclusive Color Themes
- Authentic Wood and Aluminum Trim
- Fractal Stitching

- Power-Sliding Center Console¹
- Panoramic Sunroof Is Available

ENTERTAINED AND INFORMED

Intuitive technology helps keep you and your passengers effortlessly connected on the go.

- New 12" Diagonal Digital Driver Information Center
- Bose® 14-Speaker Centerpoint® Surround Sound
- Multicolor 15" Diagonal Head-Up Display



ELITE INSTRUMENTATION

The exclusive Yukon Denali dash is a seamless combination of aesthetics and function for the optimal display of both information and style.

Customize your Yukon Denali with a choice of four distinctive color themes featuring premium leather appointments and authentic wood details.



Teak/Light Shale



Dark Walnut/Very Dark Ash Gray



Brownstone/Jet Black



Jet Black/Jet Black

DENALI EXTERIOR



DESIGN THAT SPEAKS FOR ITSELF

The big, bold and beautiful Yukon Denali will leave you speechless—while its sculpted curves say: outgoing, strong, well-defined, spacious, active and capable.

Due to current supply-chain shortages, certain features shown have limited or late availability, or are no longer available. See the window label or a dealer regarding the features on an individual vehicle.

DENALI

REFINED DETAILS

- Dual Exhaust System With Dual Twin-Polished Stainless-Steel Tips (Gas Engine Only)
- LED Headlamps and Taillamps With Signature C-Shape Lighting
- Satin Chrome Grille, Bodyside Molding, Door Handles and Fog-Lamp Surround
- 20" Polished Aluminum Wheels; 22" Bright Machined Aluminum Wheels Are Available
- Illuminated Power-Retractable Assist Steps Are Available



BIG ADVENTURE AWAITS IN **YUKON AT4**

Adventure-ready, authentically capable and undeniably premium, Yukon has what you need to explore and discover what lies beyond the boundaries.

AT4



Due to current supply-chain shortages, certain features shown have limited or late availability, or are no longer available. See the window label or a dealer regarding the features on an individual vehicle.



Due to current supply-chain shortages, certain features shown have limited or late availability, or are no longer available. See the window label or a dealer regarding the features on an individual vehicle.



TACKLE TOUGH TERRAIN

- AT4-Specific Front Design Features Skid Plate and an Approach Angle of Nearly 32 Degrees
- 20" All-Terrain Tires

- 6.2L V8 Engine Is Available
- Four-Corner Air Ride Adaptive Suspension Is Available
- Active Response 4WD™ System Is Available

AT4 INTERIOR



ROUGH IT IN REFINED STYLE

Due to current supply-chain shortages, certain features shown have limited or late availability, or are no longer available. See the window label or a dealer regarding the features on an individual vehicle.

AT4 INTERIOR



UPGRADE YOUR ADVENTURES

Hit the trails in Yukon AT4's Jet Black interior with AT4-exclusive Brandy accents and dark brushed aluminum details designed to help you explore in comfort.

AT4

Due to current supply-chain shortages, certain features shown have limited or late availability, or are no longer available. See the window label or a dealer regarding the features on an individual vehicle.

EXCLUSIVE AT4 CABIN OFFERS:

- Dark Brushed Aluminum Details
- Durable Jet Black Interior With Brandy Seat and Stitching Accents
- Heated and Ventilated Front Perforated Leather Seating Surfaces¹
- Multicolor 15" Diagonal Head-Up Display With an Off-Road Inclinometer Is Available
- High Definition Surround Vision² Is Available



AT4



Due to current supply-chain shortages, certain features shown have limited or late availability, or are no longer available. See the window label or a dealer regarding the features on an individual vehicle.



THE POWER YOU NEED

Yukon's robust power—provided by an available 6.2L V8 engine, delivering 420 hp—is just begging to be unleashed.

And paired with a 10-speed automatic transmission, it gives you 460 lb-ft of torque so going big is always on the table.

Due to current supply-chain shortages, certain features shown have limited or late availability, or are no longer available. See the window label or a dealer regarding the features on an individual vehicle.



Confidently maneuver in slick or off-road conditions with an available Active Response 4WD system that seamlessly sends optimal torque to each wheel to improve traction.

- 10-Speed Automatic Transmission
- 5.3L V8 With 355 hp and 383 lb-ft of Torque
- 6.2L V8 With 420 hp and 460 lb-ft of Torque Is Available
- 3.0L Duramax Turbo Diesel With 277 hp and 460 lb-ft of Torque Is Available
- Four-Corner Air Ride Adaptive Suspension Is Available

Due to current supply-chain shortages, certain features shown have limited or late availability, or are no longer available. See the window label or a dealer regarding the features on an individual vehicle.

— VERSATILITY



144.7 CU. FT.



THE ROOM YOU NEED



Yukon gives you up to 122.9 cu. ft. and Yukon XL offers up to 144.7 cu. ft. of generous, easily accessible max cargo room¹ with both rear rows folded down.

— VERSATILITY

LIVE EVEN LARGER WITH YUKON XL

Upsize your life with Yukon XL, featuring more cargo room behind the first, second and third rows, a more spacious cabin, more flexible cargo space and more fuel capacity than Yukon.



Due to current supply-chain shortages, certain features shown have limited or late availability, or are no longer available. See the window label or a dealer regarding the features on an individual vehicle.

EASY ACCESS

Enjoy added convenience with the available hands-free programmable power liftgate with GMC logo projection, which opens with just a kick of your foot.

With seating for up to nine,¹ second-row seats that offer an available power-release fold-and-tumble feature and available third-row power fold-flat seats, the transition from passengers to cargo is effortless.



Due to current supply-chain shortages, certain features shown have limited or late availability, or are no longer available. See the window label or a dealer regarding the features on an individual vehicle.

POWERFUL CAPABILITY AND ADVANCED TECHNOLOGY TO TOW UP TO 8,400 LBS

Large living sometimes needs large gear, and Yukon is engineered to pull big—up to 8,400 lbs.¹

And with the available ProGrade™ Trailering System to help you keep tabs on Yukon and your trailer with up to 13 available camera views,² you can do it with confidence.

Thirteen camera views not available on vehicle shown.



Due to current supply-chain shortages, certain features shown have limited or late availability, or are no longer available. See the window label or a dealer regarding the features on an individual vehicle.

TRAILER TECH

Create custom trailer profiles with the available in-vehicle Trailing App¹ integrated into Yukon's infotainment system,² and find maintenance reminders, predeparture checklists, a Trailer Light Sequence Test and a Trailer Tire Pressure Monitoring System.³

SMART TRAILER INTEGRATION

The ASA Electronics iN•Command[®] Control System,⁴ available on Yukon, is designed to integrate with and be accessible through the myGMC mobile app⁵ (on compatible iPhone[®] and Android[™] smartphones) or on your vehicle's infotainment system via Apple CarPlay^{®6} and Android Auto^{™7}. The iN•Command Control System allows you to monitor and control a range of smart system functions such as water tank levels, climate controls and power slide-outs in recreational trailers equipped with GlobalConnect technology.

UP TO
13 AVAILABLE
**CAMERA
VIEWS¹**

- | | |
|------------------------|---|
| 1. SURROUND VIEW | 8. REAR SIDE VIEW |
| 2. REAR CAMERA MIRROR | 9. HITCH GUIDANCE WITH HITCH VIEW |
| 3. FRONT CAMERA VIEW | 10. TRANSPARENT TRAILER VIEW
(REQUIRES COMPATIBLE
CONVENTIONAL TRAILER) |
| 4. REAR CAMERA VIEW | 11. INSIDE TRAILER VIEW |
| 5. FRONT TOP-DOWN VIEW | 12. REAR TRAILER VIEW |
| 6. REAR TOP-DOWN VIEW | 13. PICTURE-IN-PICTURE VIEW |
| 7. FRONT SIDE VIEW | |

Safety or driver-assistance features are no substitute for the driver's responsibility to operate the vehicle in a safe manner. The driver should remain attentive to traffic, surroundings and road conditions at all times. Visibility, weather and road conditions may affect feature performance. Read the vehicle Owner's Manual for more important feature limitations and information.





BIG-TIME PEACE OF MIND

Living large means traveling with a higher level of confidence—that's why Yukon enhances your awareness of the road and surrounding vehicles with GMC Pro Safety Plus,¹ a suite of available advanced collision-avoidance and driver-assistance technologies.



Due to current supply-chain shortages, certain features shown have limited or late availability, or are no longer available. See the window label or a dealer regarding the features on an individual vehicle.

GMC PRO SAFETY PLUS¹ IS STANDARD ON SLT, AT4 AND DENALI AND INCLUDES:

- Lane Change Alert With Side Blind Zone Alert
- Lane Keep Assist With Lane Departure Warning
- Rear Cross Traffic Alert
- Automatic Emergency Braking
- Forward Collision Alert
- Rear Park Assist (Feature Will Not Function on Certain Models Without Dealer Retrofit; See Dealer for Details)
- Following Distance Indicator
- Front Pedestrian Braking
- IntelliBeam—Auto High Beams



Due to current supply-chain shortages, certain features shown have limited or late availability, or are no longer available. See the window label or a dealer regarding the features on an individual vehicle.



KEEP YOUR CONNECTION STRONG

Enjoy the experience of a seamlessly connected drive. GMC Connected Services¹ elevates your ownership experience.

YUKON OFFERS:

- New Google built-in² Compatibility With Google Maps
- GMC Connected Services¹
- myGMC Mobile App³
- Wi-Fi® Hotspot⁴
- In-Vehicle Apps⁵ Such as Spotify^{®6}



STAY IN COMMAND WHEREVER THE ACTION LEADS

- 10.2" Diagonal Premium GMC Infotainment System¹
- Wireless Apple CarPlay® Compatibility²
- Wireless Android Auto Compatibility³
- Google built-in⁴ Is Available
- Wireless Charging⁵ Is Available



Due to current supply-chain shortages, certain features shown have limited or late availability, or are no longer available. See the window label or a dealer regarding the features on an individual vehicle.





GET THERE WITH GOOGLE BUILT-IN

Available Google built-in¹ compatibility is now fully integrated into the GMC Infotainment System.² With Google built-in, you will receive a helpful, personalized and seamless way to enhance your in-vehicle experience. With Google Assistant, Google Maps and Google Play, you get access to hands-free help, live traffic updates, some of your favorite apps and more.

HELP WHEN YOU NEED IT

With available OnStar® Safety and Security, you'll have added peace of mind knowing an Emergency-Certified Advisor¹ is ready to help. Whether it's a crash, a vehicle theft or an emergency situation, help is available 24/7.

The Safety & Security Plan² includes the OnStar Guardian™ App,³ which lets you bring the key OnStar safety services you depend on into any vehicle. Help in a crash, assistance with a flat tire and more are available through your smartphone. Best of all, you can share OnStar Guardian with up to seven of your loved ones at no additional cost.



FIND YOUR TRUE COLORS

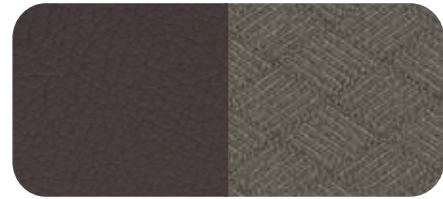
Click the swatches to explore the available vehicle colors.



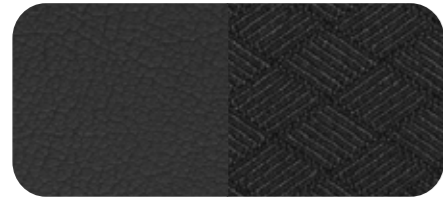
Due to current supply-chain shortages, certain features shown have limited or late availability, or are no longer available. See the window label or a dealer regarding the features on an individual vehicle.

INTERIOR COLORS AND TEXTURES

SLE



DARK WALNUT/
SLATE CLOTH



JET BLACK/
JET BLACK CLOTH

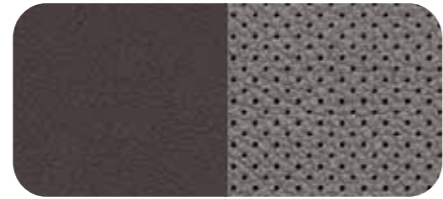


KAITAIN LINE TONE

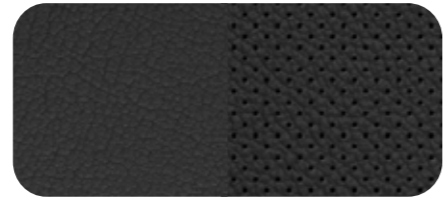


AEGIS PATTERNED
ALUMINUM

SLT



DARK WALNUT/
SLATE FRONT PERFORATED
LEATHER-APPOINTED



JET BLACK/JET BLACK
FRONT PERFORATED
LEATHER-APPOINTED

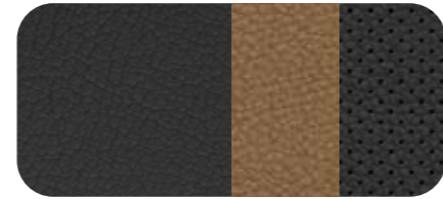


CALADAN TONE



AEGIS PATTERNED
ALUMINUM

AT4



JET BLACK/JET BLACK FRONT
PERFORATED LEATHER SEATING
SURFACES WITH BRANDY ACCENTS

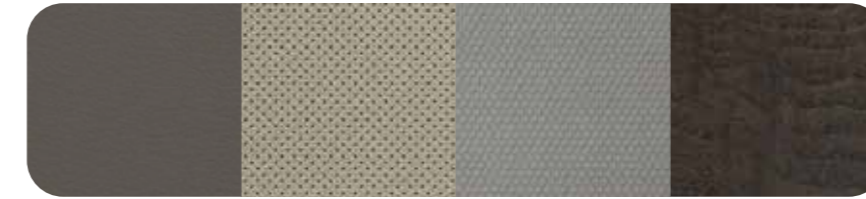


TECHNICAL
APPEARANCE

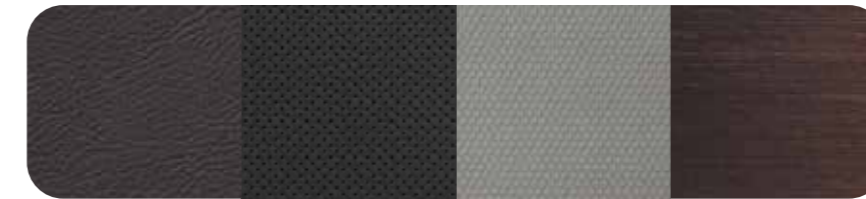


DARK BRUSHED
ALUMINUM

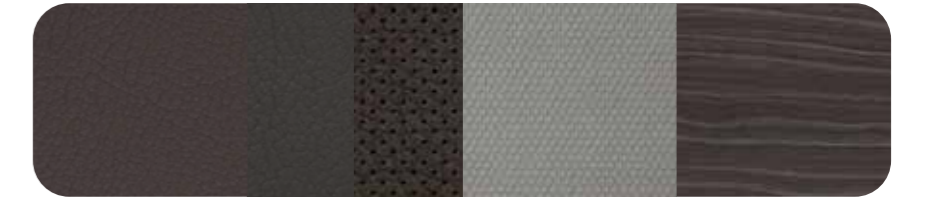
DENALI



TEAK/LIGHT SHALE FRONT PERFORATED
LEATHER SEATING SURFACES
ATREIDES PATTERNED ALUMINUM
PANDION ASH WOOD



BROWNSTONE/JET BLACK
FRONT PERFORATED LEATHER
SEATING SURFACES
ATREIDES PATTERNED ALUMINUM
ACCIPITER OMBRE WOOD



DARK WALNUT/VERY DARK ASH GRAY
FRONT PERFORATED LEATHER
SEATING SURFACES
ATREIDES PATTERNED ALUMINUM
GALLINAGO PLANK WOOD



JET BLACK/JET BLACK
FRONT PERFORATED LEATHER
SEATING SURFACES
ATREIDES PATTERNED ALUMINUM
ANHINGA ASH WOOD

PRECISION-CRAFTED FROM THE GROUND UP



18"

18" 6-SPOKE MACHINED ALUMINUM WITH DARK GRAY METALLIC ACCENTS (UHN) Standard on SLE



20"

20" 6-SPOKE POLISHED ALUMINUM (NZG)
Standard on SLT;
Available on SLE



20"

20" 6-SPOKE POLISHED ALUMINUM (NZM)
Available on SLT



20"

20" 6-SPOKE MACHINED ALUMINUM WITH CARBON GRAY METALLIC ACCENTS (NZH) Standard on AT4



20"

20" 6-SPOKE MULTIDIMENSIONAL POLISHED ALUMINUM (RTL) Standard on Denali



22"

22" BRIGHT MACHINED ALUMINUM WITH PREMIUM PAINT (RPU)
Available on Denali

YOUR YUKON. YOUR STYLE.

GMC Accessories are a great way to personalize your Yukon—inside and out. They're designed and engineered to meet the Professional Grade standards of your Yukon, as well as your own. We also offer accessories from a lineup of other renowned and proven manufacturers.

Find a full selection of Yukon accessories
at gmc.com/accessories.



Accessories shown: accessory roof rack crossrails and Thule® roof-mounted ski and snowboard carrier.

Due to current supply-chain shortages, certain features shown have limited or late availability, or are no longer available. See the window label or a dealer regarding the features on an individual vehicle.

**ACCESSORY FIRST-ROW PREMIUM
ALL-WEATHER FLOOR LINER**



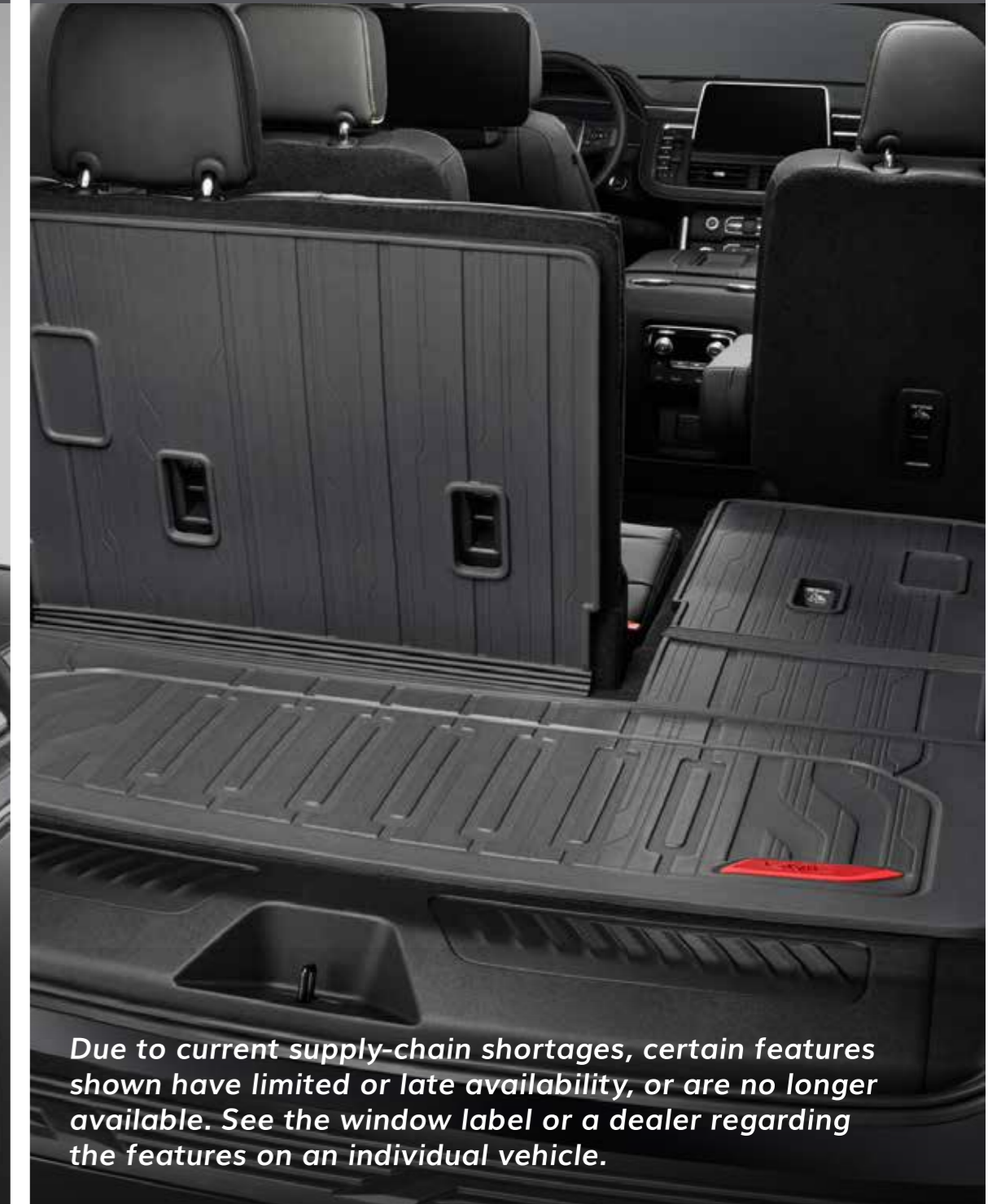
**ACCESSORY CHROME MIRROR
COVERS, 22" MULTI-SPOKE CHROME
WHEELS,¹ ILLUMINATED MIRROR GMC
EMBLEM AND FRONT SPLASH GUARD**



**ACCESSORY ROOF RACK
CROSSRAILS AND THULE[®]
ROOF-MOUNTED CARGO BOX**



**ACCESSORY INTEGRATED
CARGO LINER**



Due to current supply-chain shortages, certain features shown have limited or late availability, or are no longer available. See the window label or a dealer regarding the features on an individual vehicle.

RYMCO

RASAMNY YOUNIS MOTOR CO.

RYMCO HQ

Chiyah Blvd. P.O.B 11-2737
Beirut Lebanon

T: 1599

F: +961 1 27 43 11

rymco.com



gmc.rymco.com